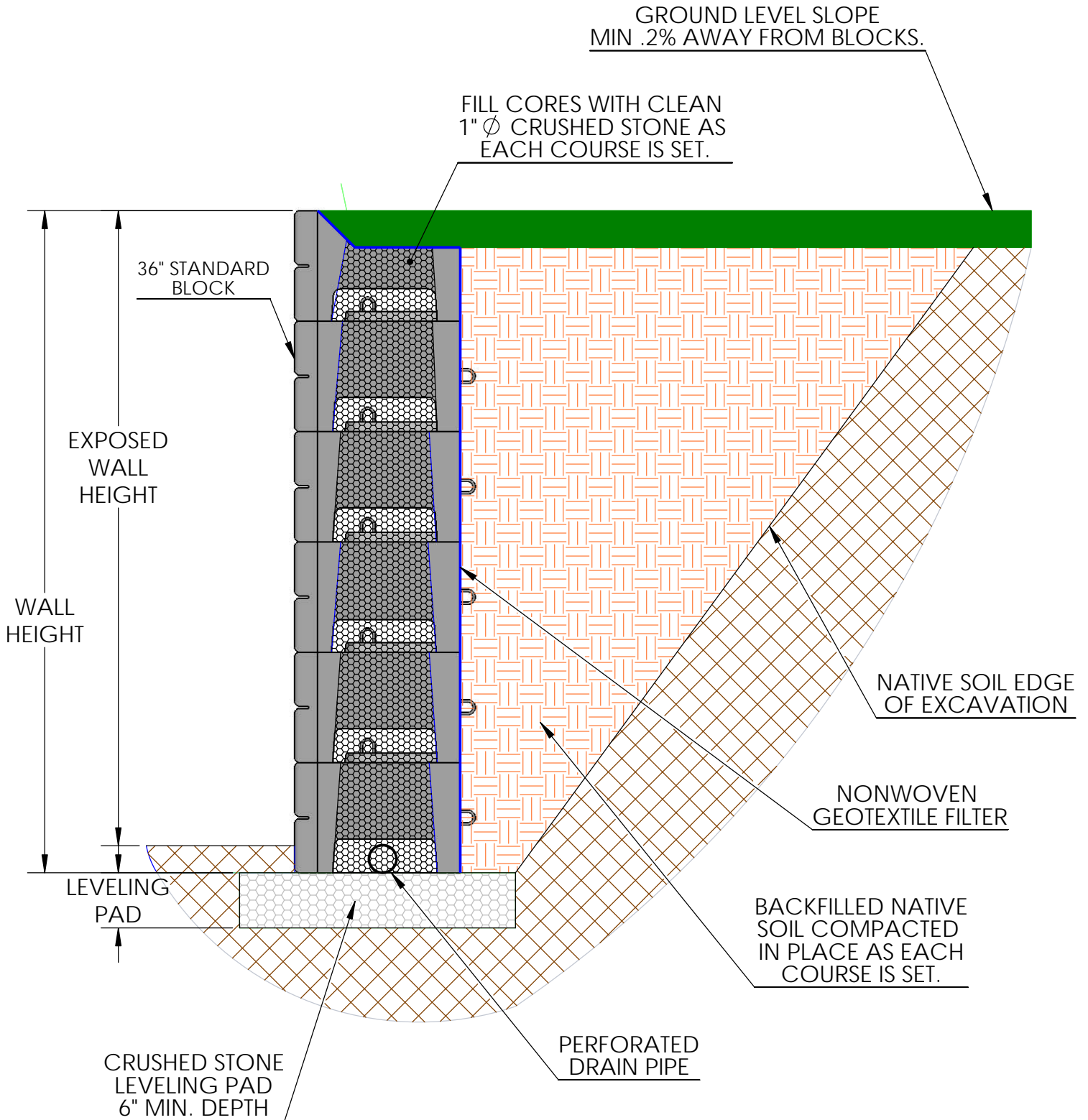


TYPICAL GRAVITY WALL WITH ZERO BATTER



DRAWN BY
R FONTANESI

DATE
1/27/2017

TITLE:

ZERO BATTER WALL

DWG NO.

WD-43

16500 SOUTH 500 WEST
BLUFFDALE, UTAH 84065
PHONE: (801) 571-2028

SCALE: 1: 30

SHEET 1 OF 1